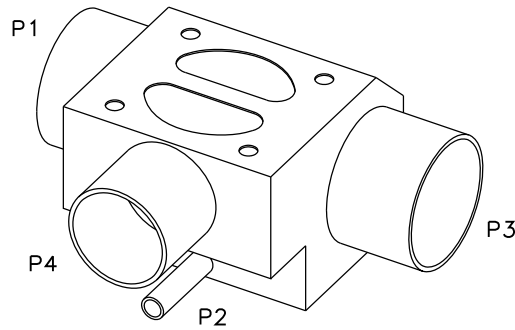
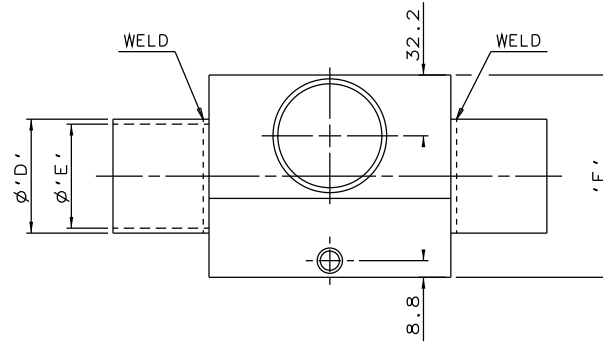
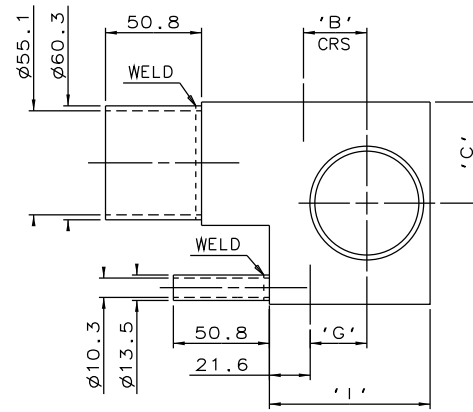
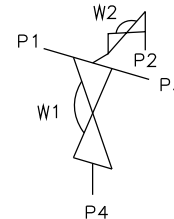
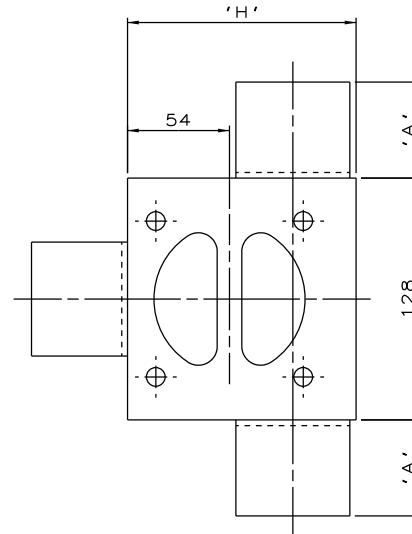


DN50 MAINLINE ONLY



DN65 TO DN100
MAINLINE ONLY



ORIENTATION AS
PER P&ID DIAGRAM
FOR OPTIMUM
DRAINABILITY.

MAINLINE SIZE	A	B	C	øD	øE	F	G	H	I	BODY WEIGHT
mm	mm	mm	mm	mm	mm	mm	mm	mm	mm	Kgs
DN50	50.8	33.6	53.5	60.3	55.1	107.0	30.1	121.0	85.1	8.0
DN65	50.8	41.5	55.0	76.1	70.9	107.0	38.0	136.5	100.6	7.2
DN80	50.8	47.9	60.0	88.9	83.7	109.0	44.4	150.0	114.1	7.1
DN100	101.6	60.6	70.0	114.3	109.1	131.0	57.1	175.0	139.1	9.4

The information on this sheet is Private and Confidential and is the property of Crane Process Flow Technologies Limited and must not be published directly or indirectly in any manner whatsoever without the written permission of the Company and must not be used in any way detrimental to their interests.
© Crane Process Flow Technologies

CRANE Process Flow Technologies
A Crane Co. Company

Saunders
The Science Inside

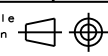
Title
SCHEDULE OF LEADING DIMENSIONS FOR DN50
WEIR 'T' BODY WITH DN8 BACK SAMPLE
ALL ENDS BUTT WELD ISO 1127 S1 TUBING

Drawn RI Date 25.05.12

Checked JRD Date 25.05.12

UNCONTROLLED IN
HARD COPY FORMAT

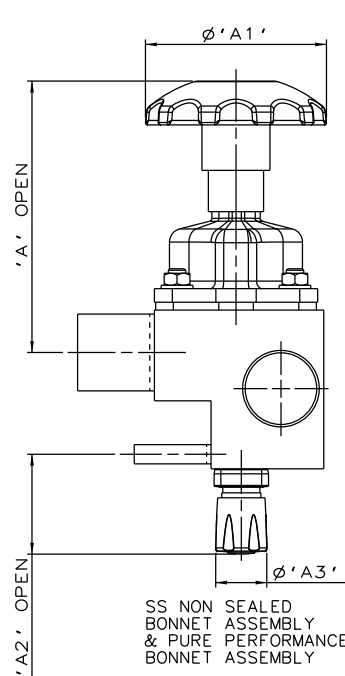
First Angle
Projection Method E



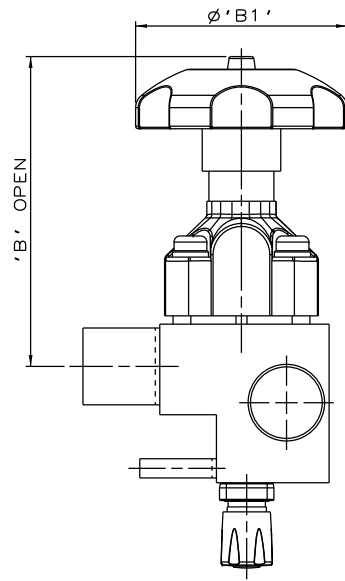
DO NOT
SCALE

Drawing No.
WEB-220

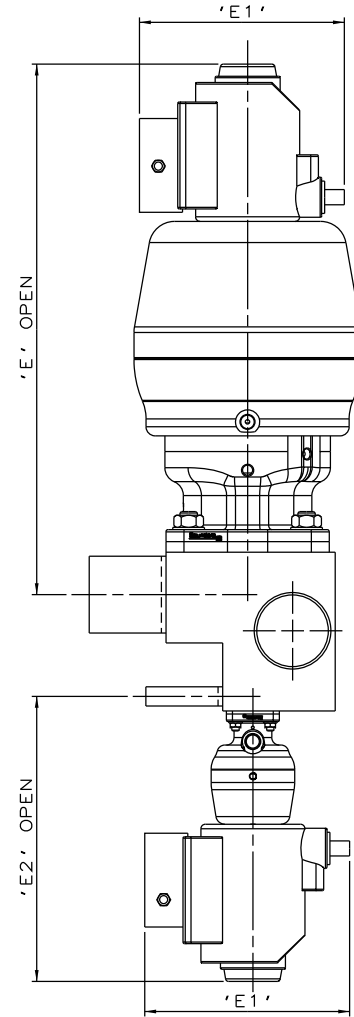
Issue.
1



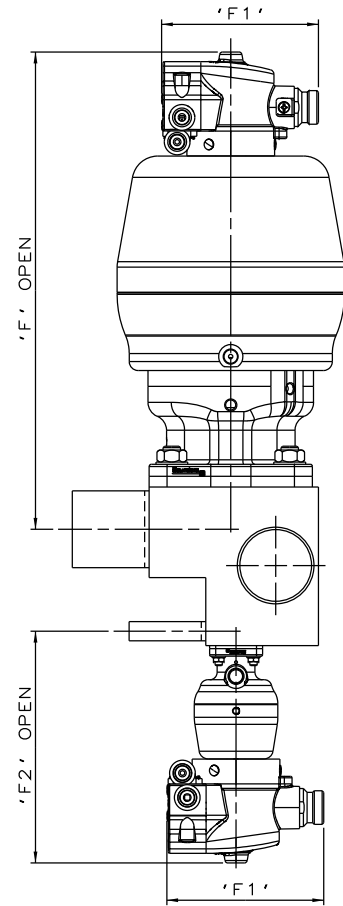
SS NON SEALED
BONNET ASSEMBLY
& PURE PERFORMANCE
BONNET ASSEMBLY



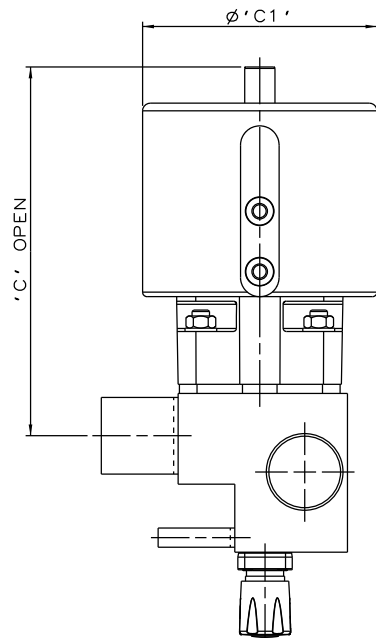
PES BONNET
& PURE PERFORMANCE
BONNET ASSEMBLY



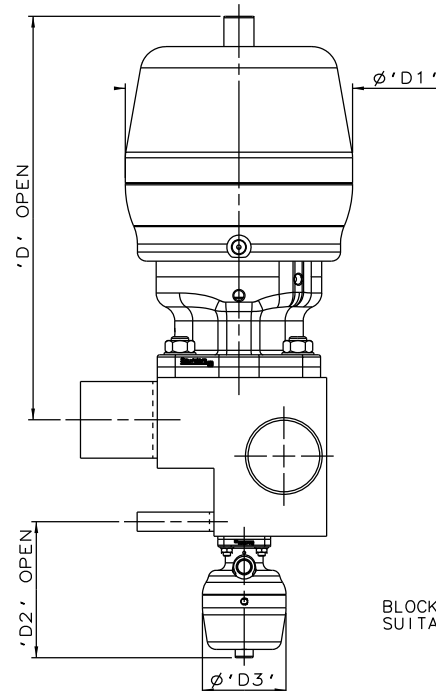
*S360 ACTUATORS
WITH I-VUE SENSOR



*S360 ACTUATORS
WITH M-VUE SENSOR



EC ACTUATOR (ALL MODES)
& PURE PERFORMANCE
BONNET ASSEMBLY



*S360 ACTUATORS

BLOCK CAN BE FITTED WITH ANY EXISTING
SUITABLE TOP WORK COMBINATIONS

The information on this sheet is Private and Confidential and is the property of Crane Process Flow Technologies Limited and must not be published directly or indirectly in any manner whatsoever without the written permission of the Company and must not be used in any way detrimental to their interests.
© Crane Process Flow Technologies

CRANE	Process Flow Technologies A Crane Co. Company	Saunders The Science Inside
--------------	--------------------------------------------------	---------------------------------------

Title
SCHEDULE OF LEADING DIMENSIONS FOR DN50/2.00
WEIR 'T' BODY WITH DN8/0.25 BACK SAMPLE
ALL ENDS BUTT WELD ISO 1127 S1 TUBING
FITTED WITH TOPWORKS OPTIONS

Drawn RI	Date 09.05.17	UNCONTROLLED IN HARD COPY FORMAT
Checked RND	Date 09.05.17	

First Angle Projection Method E		DO NOT SCALE	Drawing No. WEB-220-ASSY	Issue. 1
---------------------------------------	--	--------------------	-----------------------------	-------------

*DIMENSIONS SHOW MAXIMUM ENVELOPE FOR ALL MODES

BRANCH/SAMPLE SIZE		A	A1	A2	A3	B	B1	C	C1	D	D1	D2	D3	E	E1	E2	F	F1	F2																		
mm	inch	mm	inch	mm	inch	mm	inch	mm	inch	mm	inch	mm	inch	mm	inch	mm	inch	mm	inch	mm	inch																
DN50xDN15	2.0x0.5	184.2	7.25	120.0	4.72	65.2	2.57	34.0	1.34	213.2	8.39	140.0	5.51	248.2	9.77	155	6.10	271.2	10.68	150.0	5.90	88.8	3.50	55.0	2.18	355.2	13.98	136.0	5.35	187.8	7.39	319.2	12.57	103.8	4.09	153.8	6.06